

APPLICATION NOTE

Date:2002-10-07

Page 1 of 1

AN-Number: AN2002-11

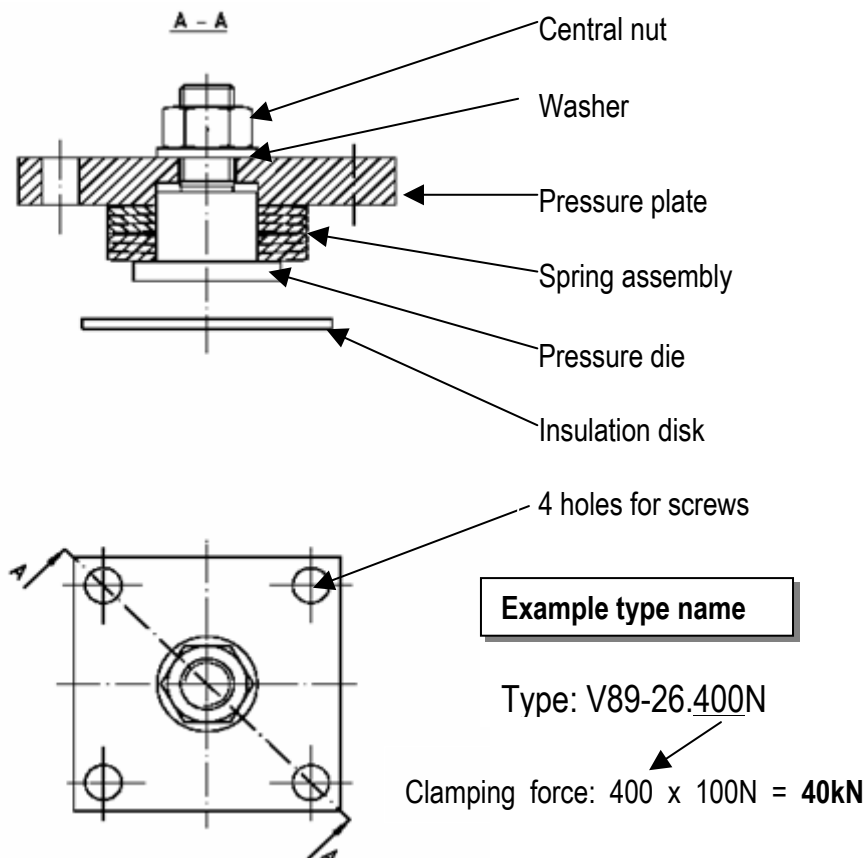
Technical Information

This application note is supposed to demonstrate how clamps and disk devices are used correctly.

Assembly instructions for clamp types V89 up to V176

Introduction:

This clamp is a so-called **pre-stressed unit**. Its main parts are the pressure plate, the spring assembly, the pressure die with nut and washer, and an insulation disk. The spring assembly is pre-stressed as per the type marking and is fixed by the central nut.



Assembly instructions for clamps

Date:2002-10-07

AN-Number: AN2002-11

Assembly:

1. 4 screws (M8, stability 8.8) with a suitable length for the device stack consisting of clamp, insulation disk, terminals, and device. As the stack's length can vary, the screws are not part of our delivery.
2. Equip the screws with a suitable insulation (e.g. PTFE-tube). The insulation – as the screws – is not included in our delivery.
3. Staple the devices, then add the clamp with the insulation disk and tighten the 4 clamping screws M8 by hand.
4. Alternately and by small turns of about 10° , the 4 clamping screws have to be tightened in such a way that the washer will loosen and that a gap towards the nut of about 0,3mm will result. The pre-stress now is fully taken over by the 4 clamping screws and the desired force is exerted on the devices to be clamped. Attention, do **not** turn the central nut, otherwise the clamping force will change during relaxation (change of devices). The nut is protected by a lacquer against turns caused by vibrations or accidental contacts.
5. If during operation and resulting from vibrations, noise is created by the moving washer, the washer can be fixed by a sealing lacquer.



Assembly instructions for clamps

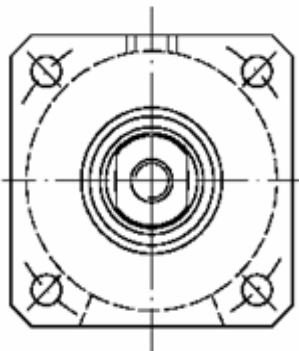
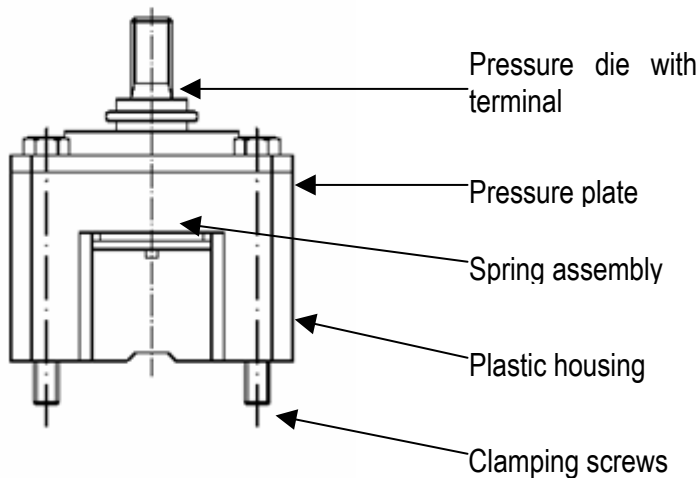
Date:2002-10-07

AN-Number: AN2002-11

Assembly instructions for clamp types V50 up to V72

Introduction:

The main parts of the clamp are the plastic housing, the pressure plate, the pressure die with the terminal (as a bent bar or a stud), the spring assembly, and the 4 clamping screws. The clamps' dimensions are in line with our disk types' diameters. The required clamping force is reached when the plastic housing is on the same level as the lower contact area (e.g. heatsink) of the disk. The pressure plate guarantees that the plastic housing will not be damaged.



Example type name

Type: V72-26.120M

Clamping force: $120 \times 100\text{N} = 12\text{kN}$



Assembly instructions for clamps

Date:2002-10-07

AN-Number: AN2002-11

Assembly:

1. Adjust the disk in the clamping device.
2. Screw the clamping device and the disk to the base plate (e.g. heatsink) by tightening the 4 clamping screws by hand.
3. Tighten the clamping screws alternately by turns of 45°. This process is repeated till the plastic housing touches the base plate or till a gap of max. 0,2mm is left.
4. The desired clamping force now is reached, even by a further tightening of the screws, the clamping force applied to the disks cannot be increased.

